

in presenza di azioni

$$N = 964 \text{ kN}$$

30x60

$$M = 393 \text{ kNm}$$

$$\text{Totale } M = 230 + 70 \simeq 300 \text{ kNm}$$

↓  
azioni

↓  
c.v.

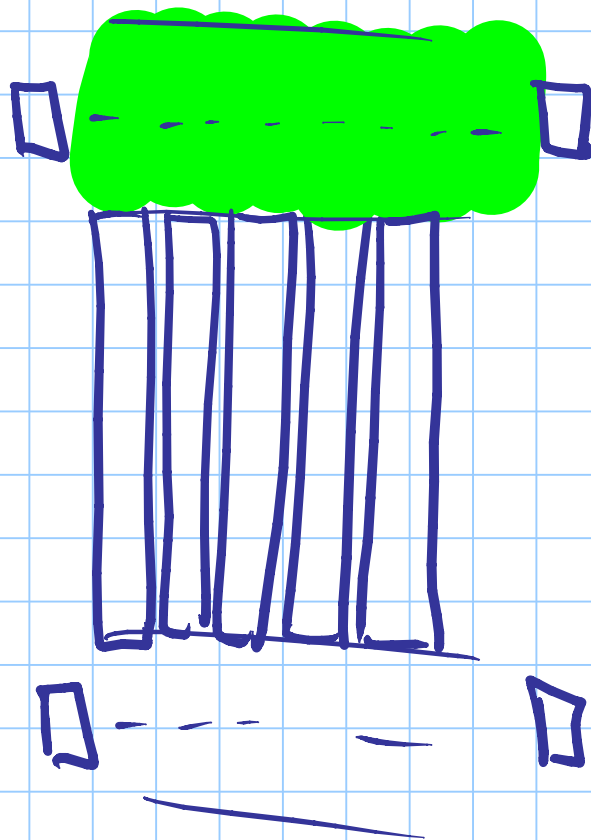
→ 30x60

# CARICHI UNITARI

		permanenti			variabili	
		p.p.	altre p.p. comp. inf.	altre (Tremori)		
solai	piano Tip	2.5	x	x	x	KN/m <sup>2</sup>
.	capitulum	x	x		x	
balconi	piano Tip	x	x		x	

Tremetti valore unit  $KN/m$

incidenza  $m^2$   $KN/m^2$

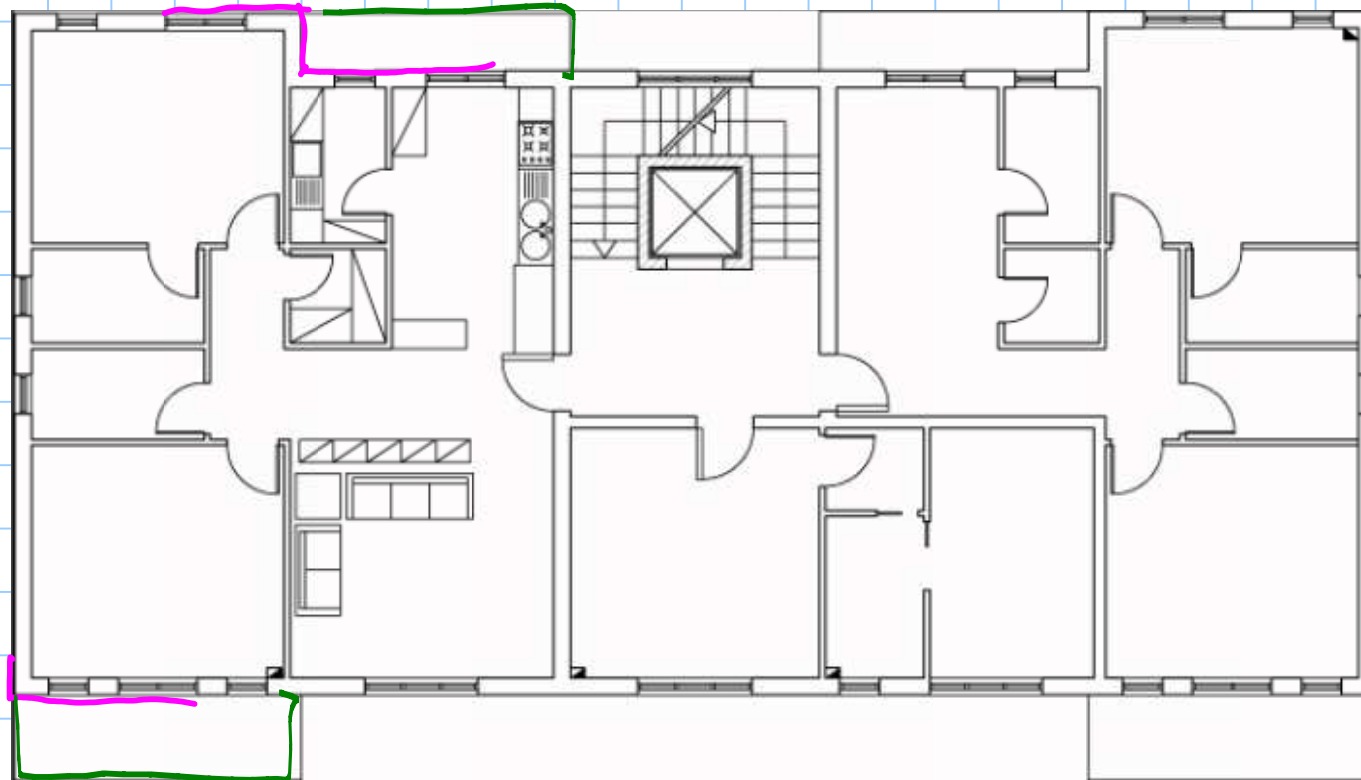


maggior pres-  
sione Trave risp. al sollec.

Trave  $80 \times 24$   $p_r = 0.8 \times 0.24 \times 25 = 4.8 \text{ kV/m}$

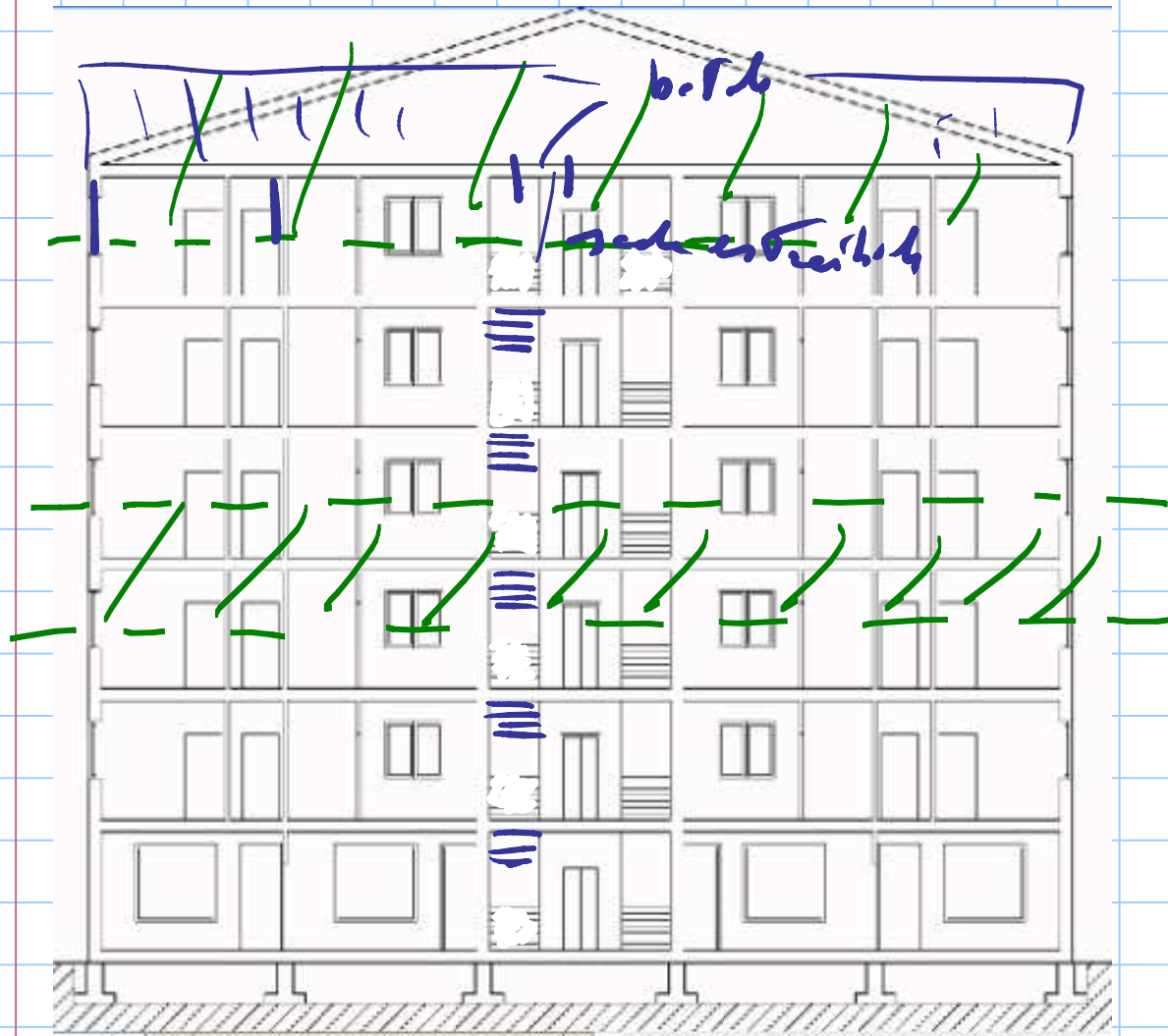
magg. pres.  $= 4.8 - 0.8 \times 2.5 = 2.8 \text{ kV/m}$

# VALUTAZIONE "ESATTA" DEL PESO IMPALCATI



$A_{im} = 275 \text{ m}^2$  incl. grade

Scdh  $A = 25 \text{ m}^2$



		$g_k$ p.r.	alt.	$T_{ren}$	$g_k$	$g_k + \psi_2 g_k$	$T_{ren}$
KN/m	solaio p.Tip	2.5	1.7	1.2	2.0	4.8	+ 1.2
	balcone	2.5	1.4	—	4.0	5.1	
	solaio sott. T.T.	2.5	0.5	—	$\psi_2 = 0$ 0.5	3.0	
	solaio T.T. legno	0.4	1.4	—	$\psi_2 = 0$ 1.2 (max.)	1.8	
	scala acciaio	1.8	0.6	—	$\psi_2 = 0.3$ 4.0 (2.13)	3.6	
KN/m	Trevi 30x60	4.0					
	Trevi legno	1.0					
	tanp.v.f.	7.0					
	tramezzo	3.0					

# PIANO TIPO

canale  
unif. fori

solare (incl. Terr.)	249.5 m <sup>2</sup>	x 4.8	1197.6 kN
balconi	26.6 m <sup>2</sup>	x 5.1	124.5
scale	25.5 m <sup>2</sup>	x 3.6	91.8
Terr. emen.	119 m	x 4.0	476.0
" spm.	19	x 2.1	39.9
pilastri	18	x 15.7	283.5
Tampone.	73 x 0.8 + 30	x 2.0	618.8
Tacchetti	66 x 0.9	x 3.0	178.2



Тот.

3012,

прям. Тир.

зур.  $299.4 \text{ м}^2$

$W = 3012 \text{ кН}$

прям.  $\times \text{м}^2$

$10.06 \text{ кН/м}^2$

## TETTO + SOTTO TETTO

solai. sott. Tetto.	288 m <sup>2</sup>	x 3.0	864.0
---------------------	--------------------	-------	-------

solai. Tetto.	288 m <sup>2</sup>	x 1.8	518.4
---------------	--------------------	-------	-------

balconi	—		
---------	---	--	--

archi	—		
-------	---	--	--

Travi sott. Tetto:

Travi emm.	119 m	x 4.0	476.0
------------	-------	-------	-------

" p.m.	19	x 2.1	39.9
--------	----	-------	------

Travi Tetto.	99 m	x 1.0	99.0
--------------	------	-------	------

$\frac{1}{2}$  pileleri iy.

$$\frac{1}{2} \times 18$$

141.8

p. lar için 2.5. T. alt.

$$6$$

$$\times 10.5$$

63.0

$\frac{1}{2}$  tam p. iy.

309.4

tam p. 2.5. T. alt.

42.0

$\frac{1}{2}$  frenler iy.

89.1

---

2590 kN