

camp. r.

$\times - \times$

s. d. a. i. o

$$1.50 + 2.7 \times 1.2 = 4.2$$

bal con

1.10

temp. u. T. u. s

p. prop. v.

TOT

g_1

g_1

in cond. simili

g_n

$\psi_2 g_H$

┌───┐

┌───┐

┌───┐

┌───┐

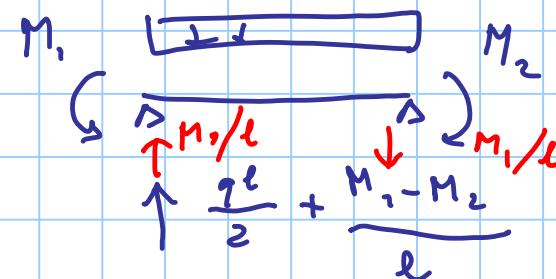
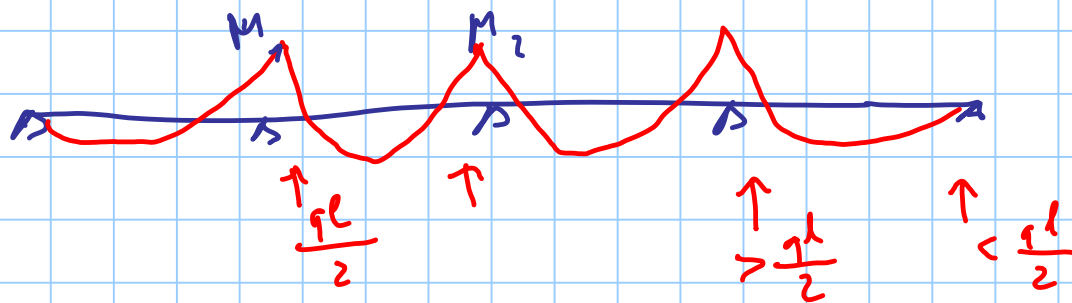
┌───┐

┌───┐

──────────

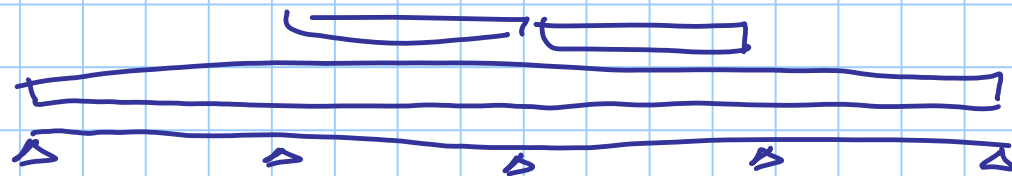
┌───┐

┌───┐



Combinazioni di curve per SLV

g_1 q_1



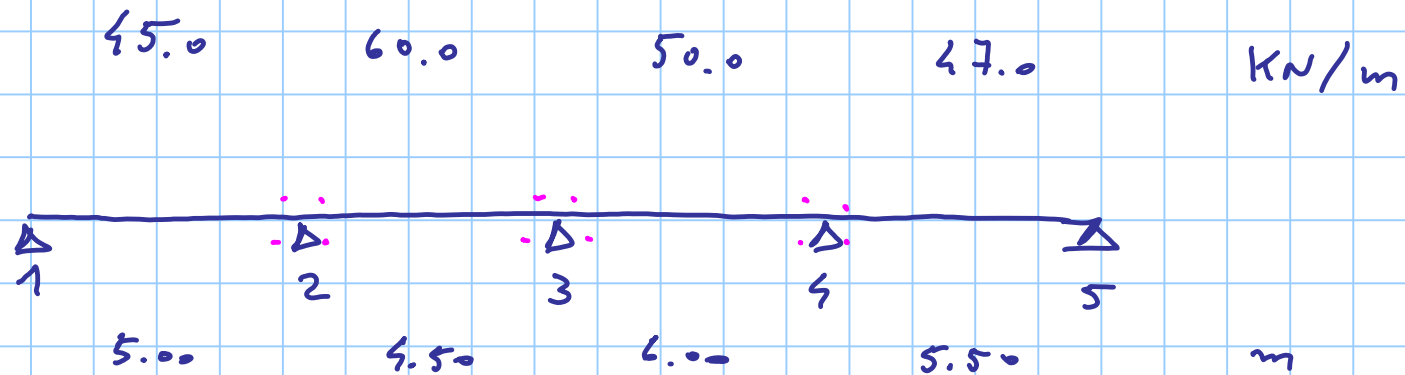
g_1

curve

q_1

+ Combinaz.

g+g



\therefore = nodi bloccati alle rotazioni

