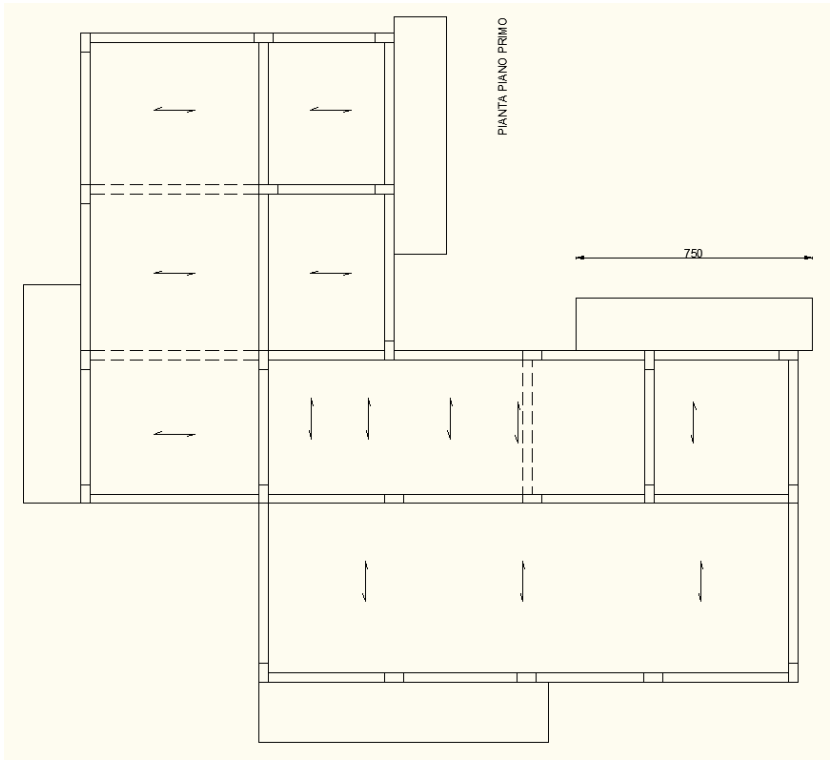
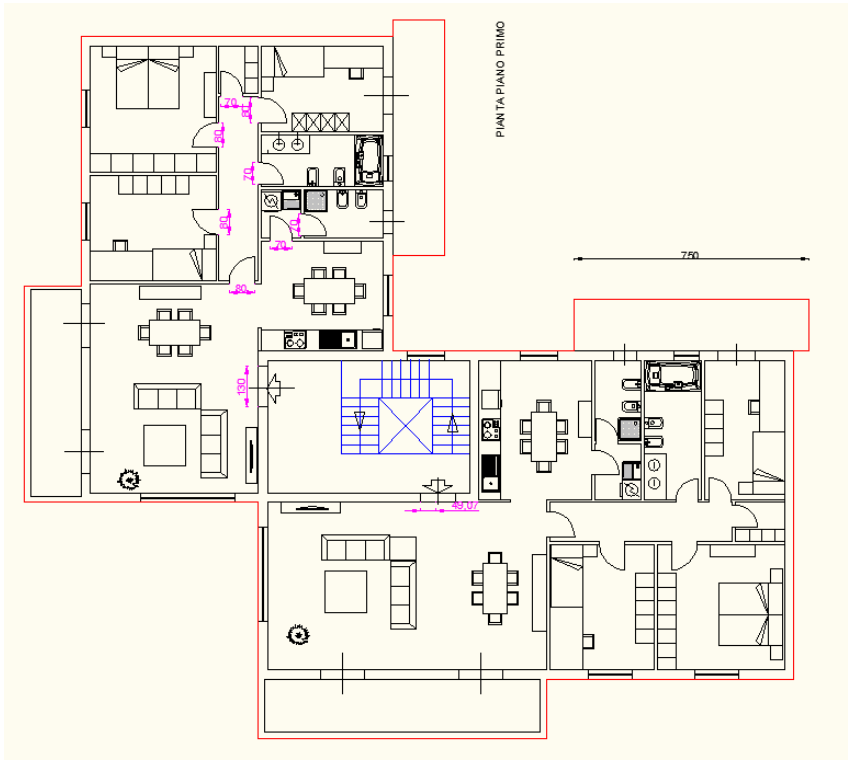


Emanuele Damiano



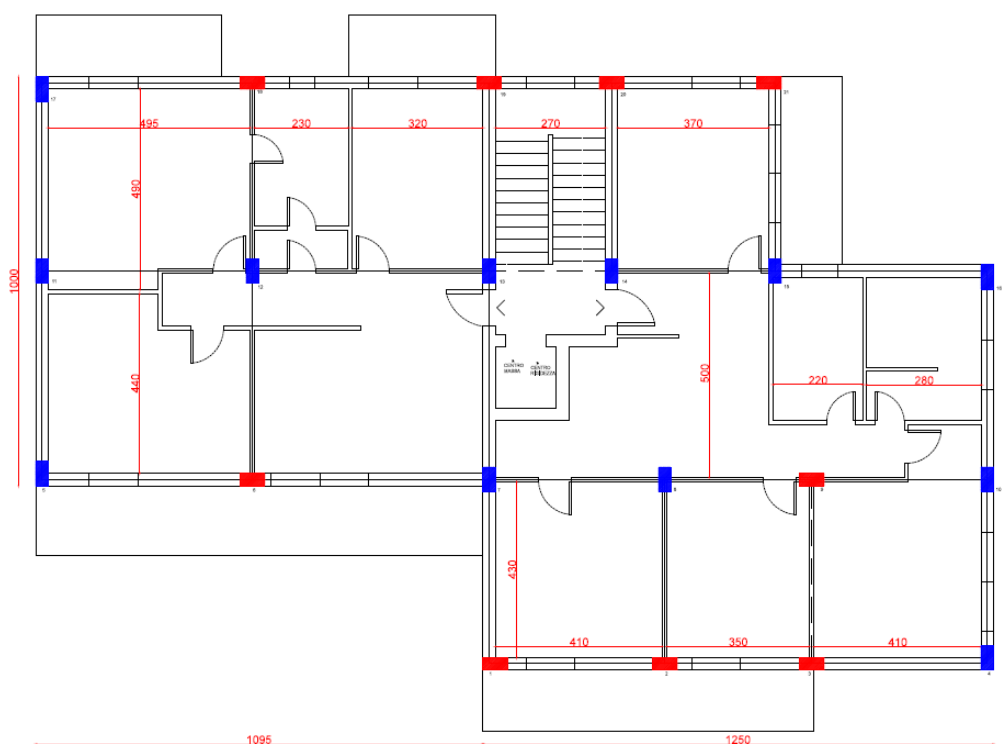
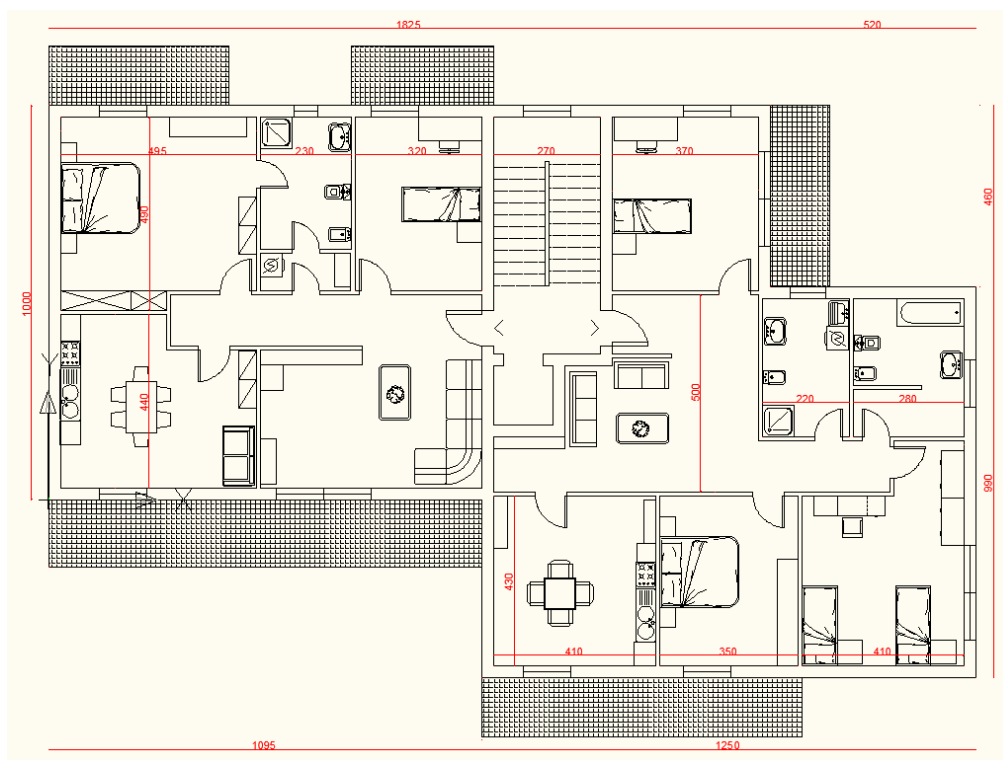
sito	ag	F _o	T _c [*]	suolo	p.int	imp lib	copert
Solarino (SR)	0.259	2.263	0.420	B	no	5	terrazza



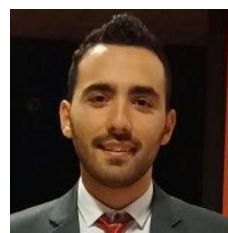
Fichera Sebastiano



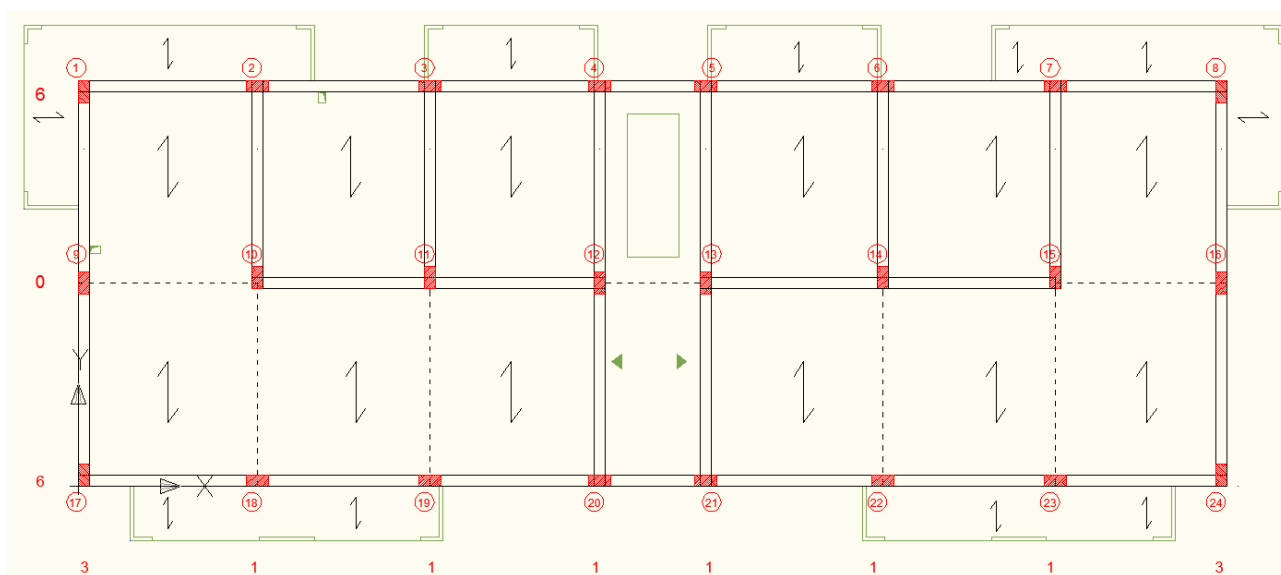
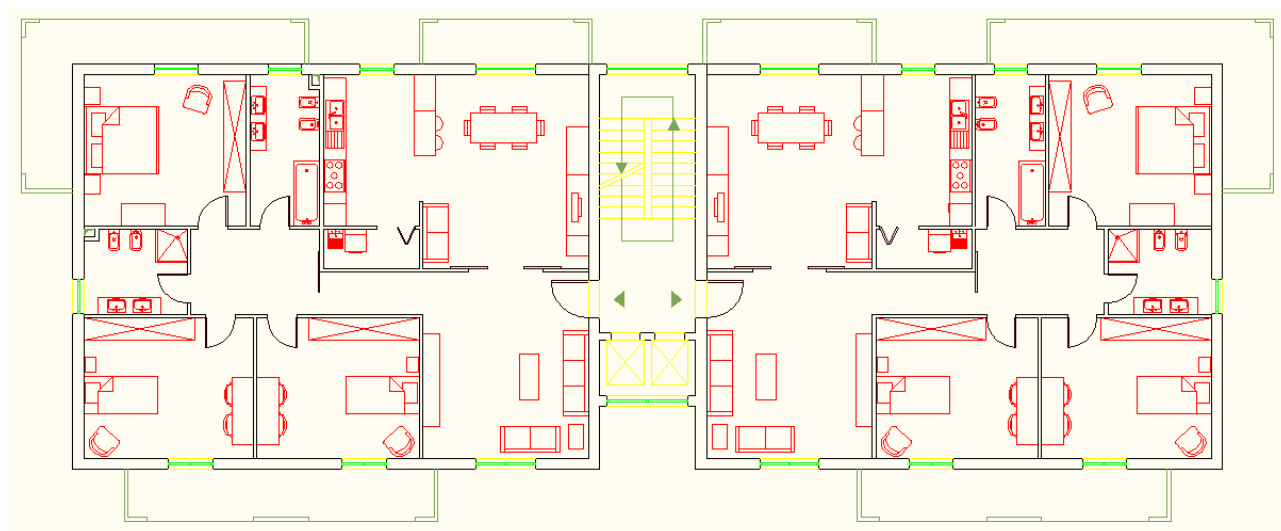
sito	ag	F ₀	T _c [*]	suolo	p.int	imp lib	copert
Sant'Agata Li Battiati (CT)	0.214	2.503	0.339	C	si,par	5	terrazza



Galasso Mirko



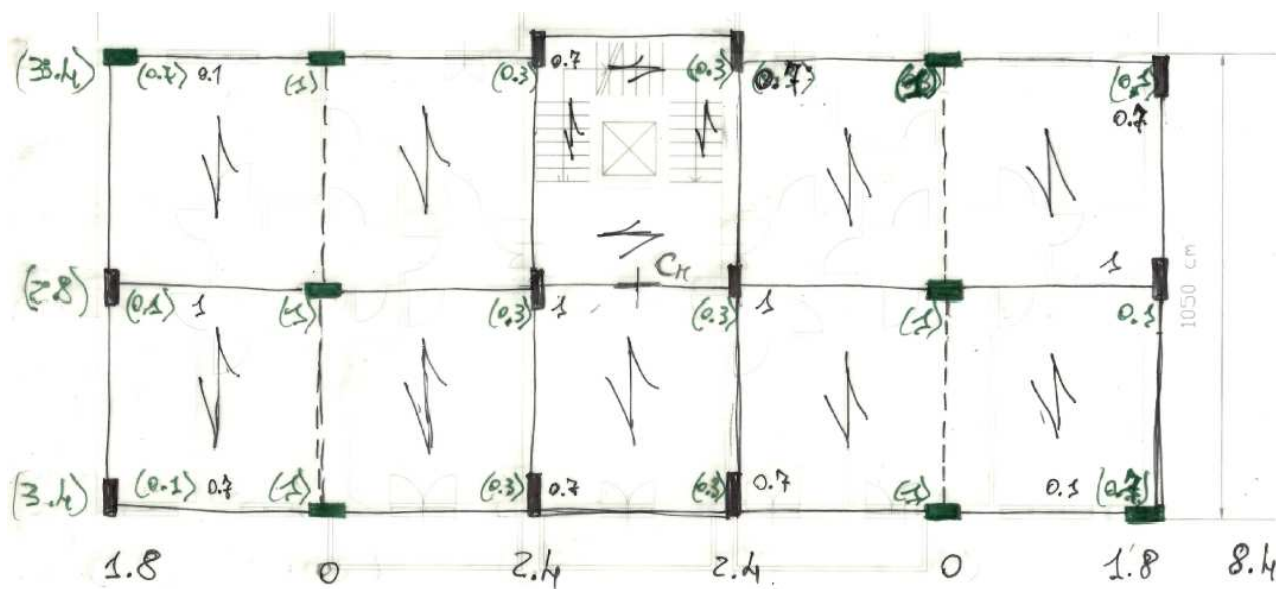
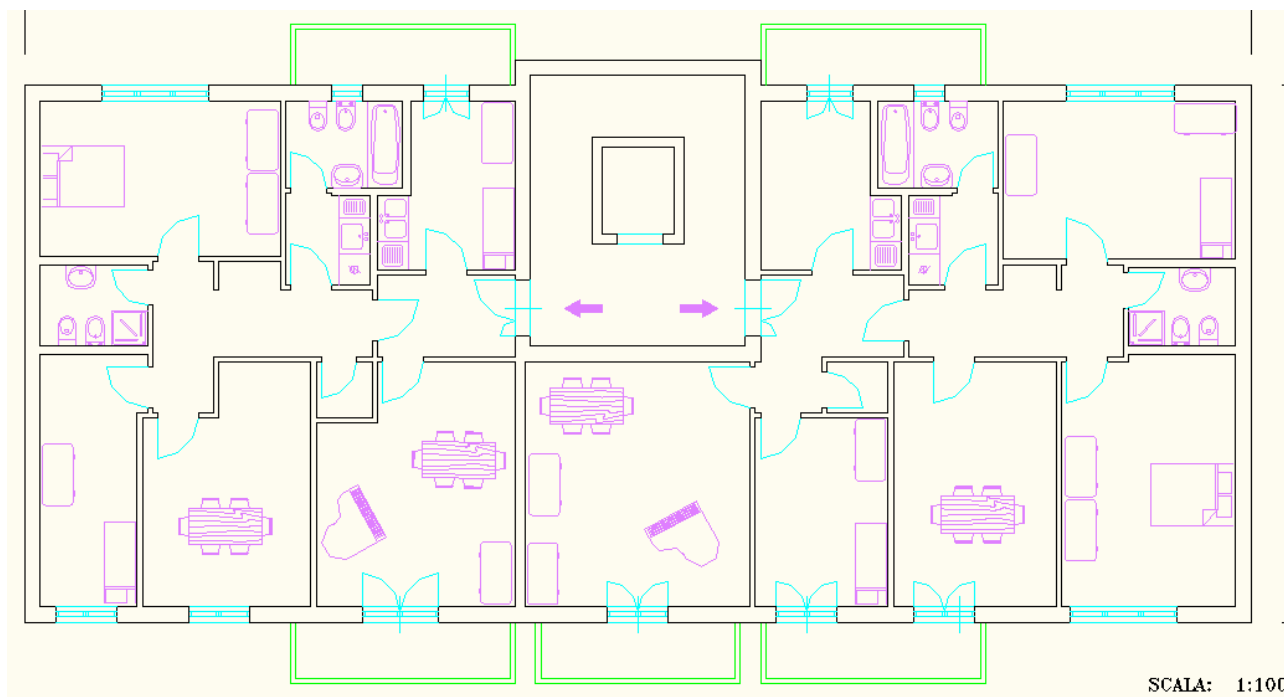
sito	ag	F _o	T _c [*]	suolo	p.int	imp lib	copert
Valverde (CT)	0.220	2.522	0.327	B	si, par	6	terrazza



Gentile Giuseppe



sito	ag	F _o	T _c [*]	suolo	p.int	imp lib	copert
Maugeri (CT)	0.220	2.540	0.323	C	no	6	tetto

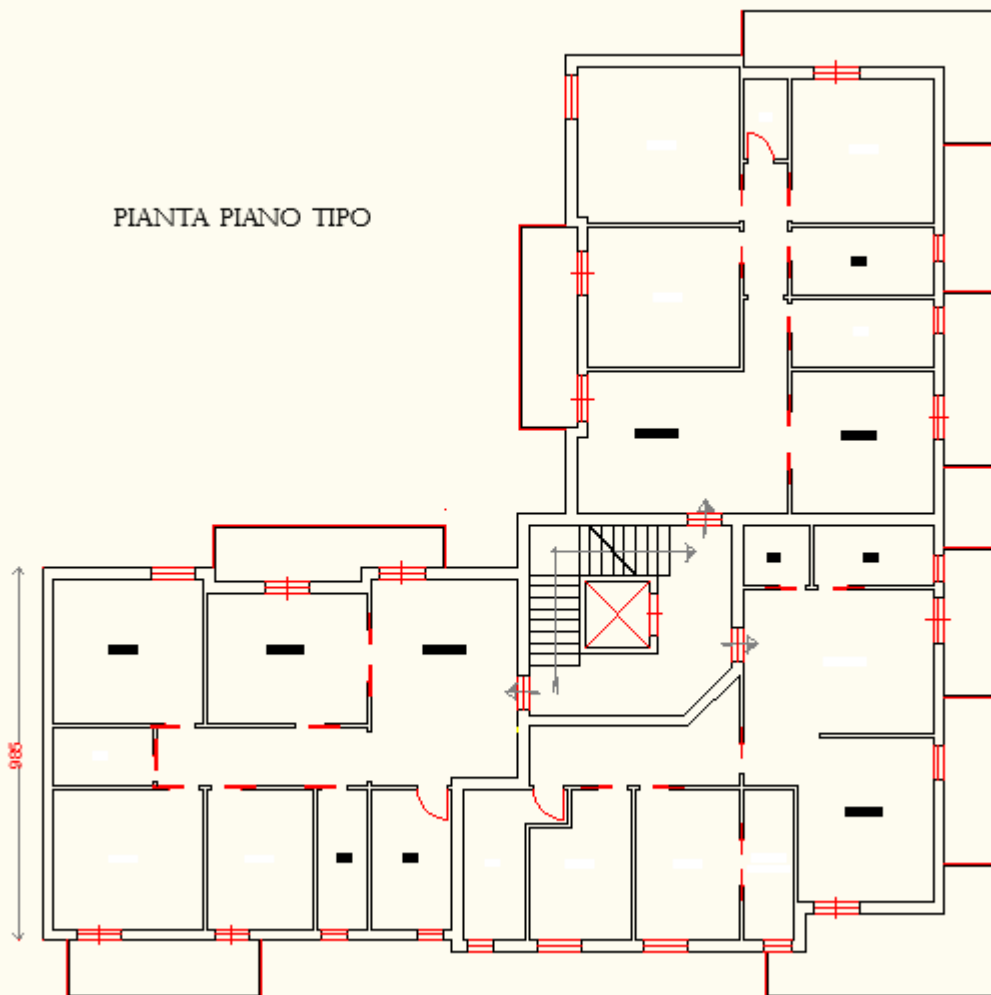


Gulizia Giovanni



sito	ag	F _o	T _c [*]	suolo	p.int	imp lib	copert
Grammichele (CT)	0.227	2.256	0.418	B	no	6	terrazza

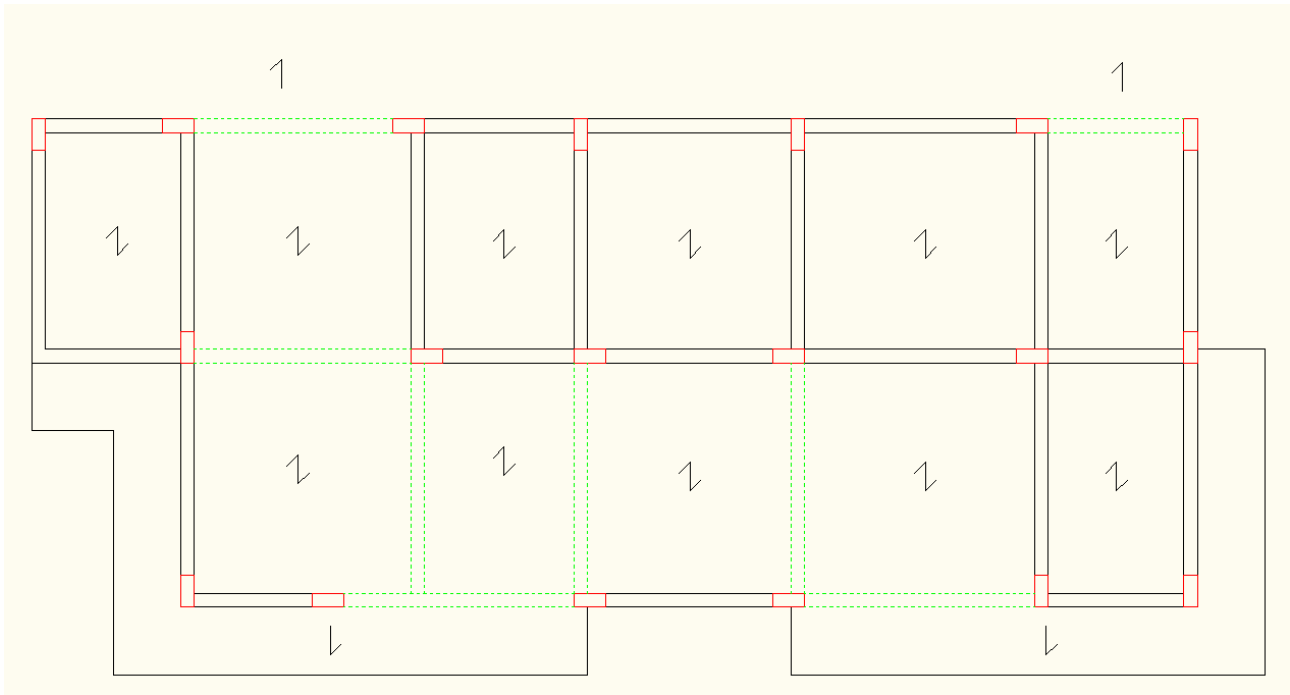
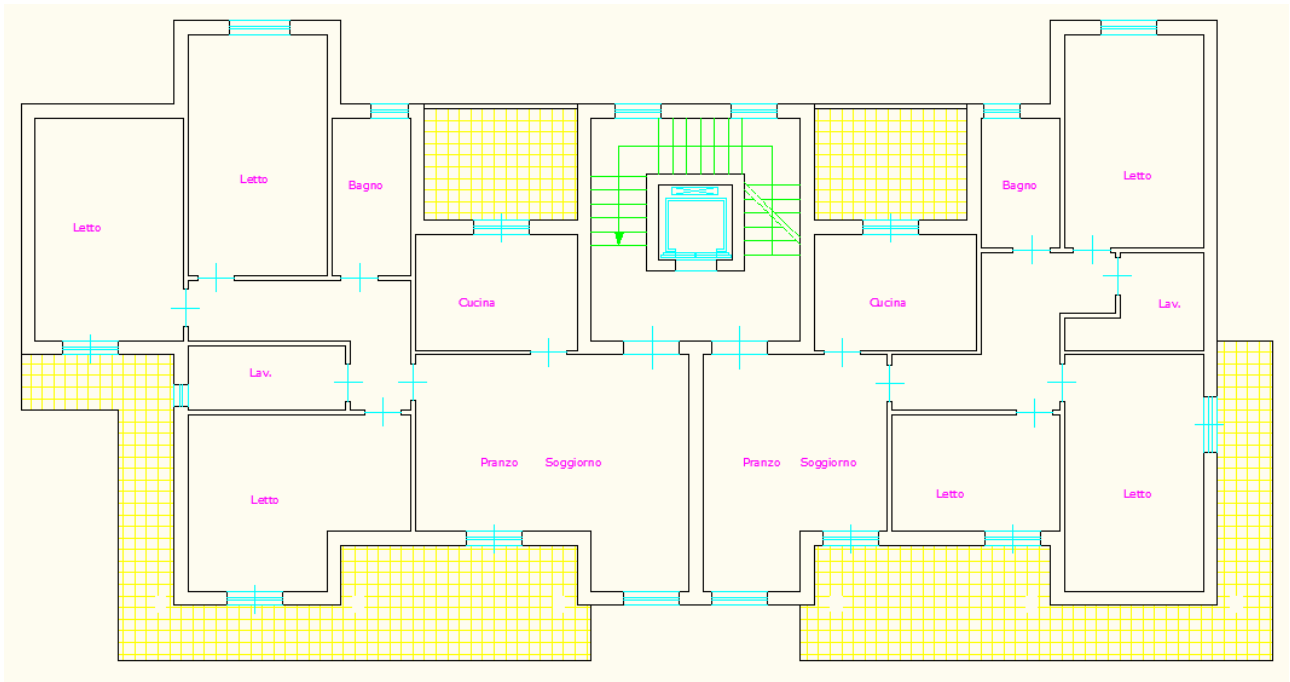
PIANTA PIANO TIPO



Lazzaro Danzuso Carmelo



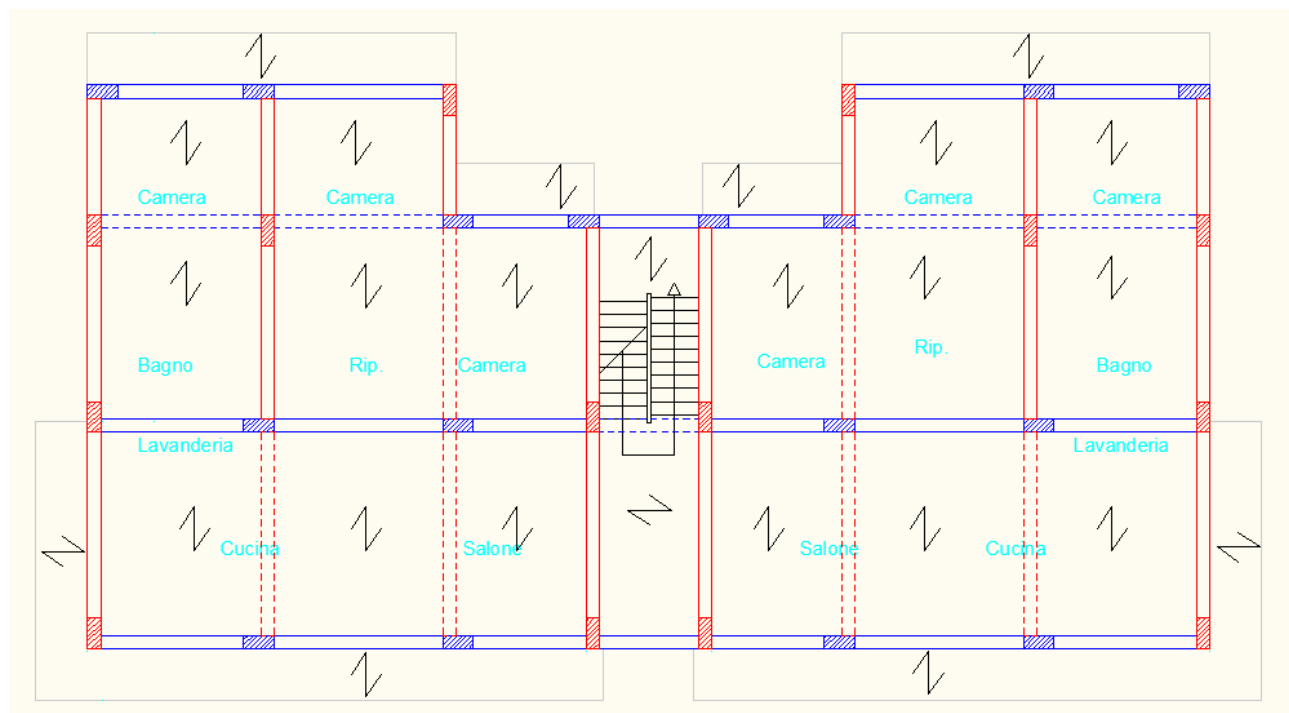
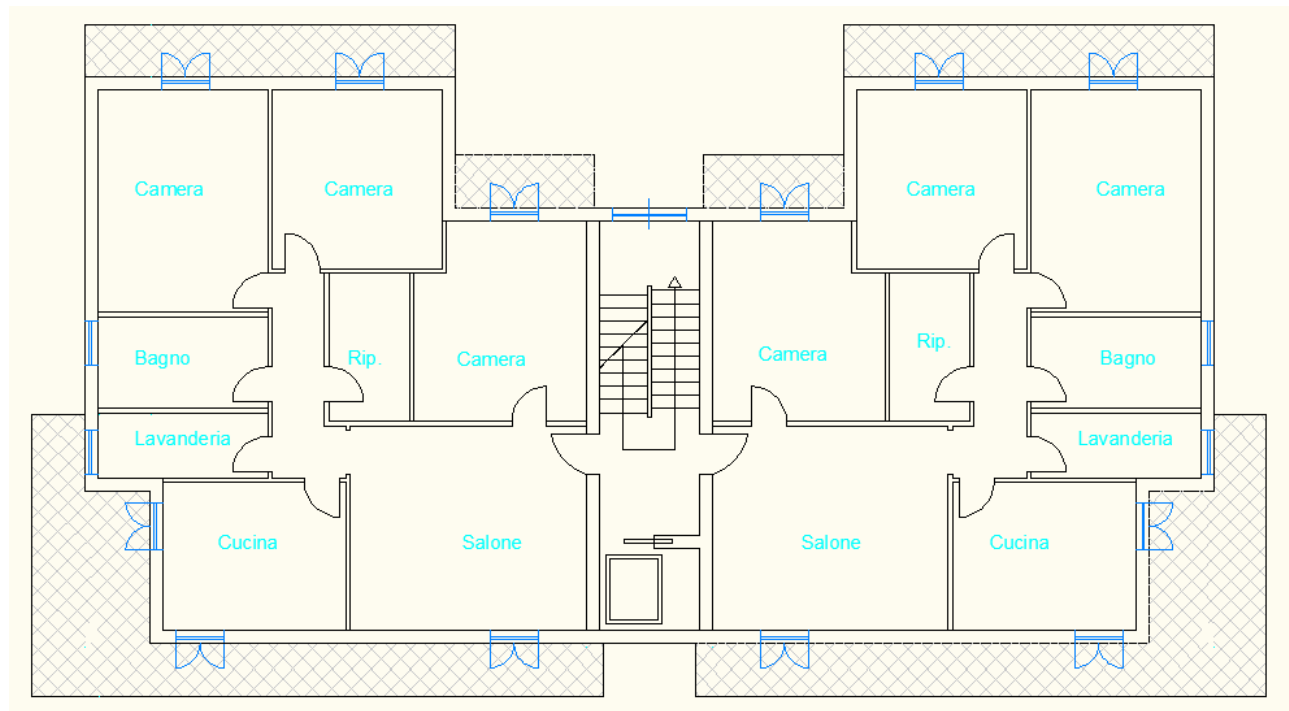
sito	ag	F _o	T _c [*]	suolo	p.int	imp lib	copert
Isernia (IS)	0.262	2.351	0.313	B	no	5	terrazza



Marotta Giuseppe



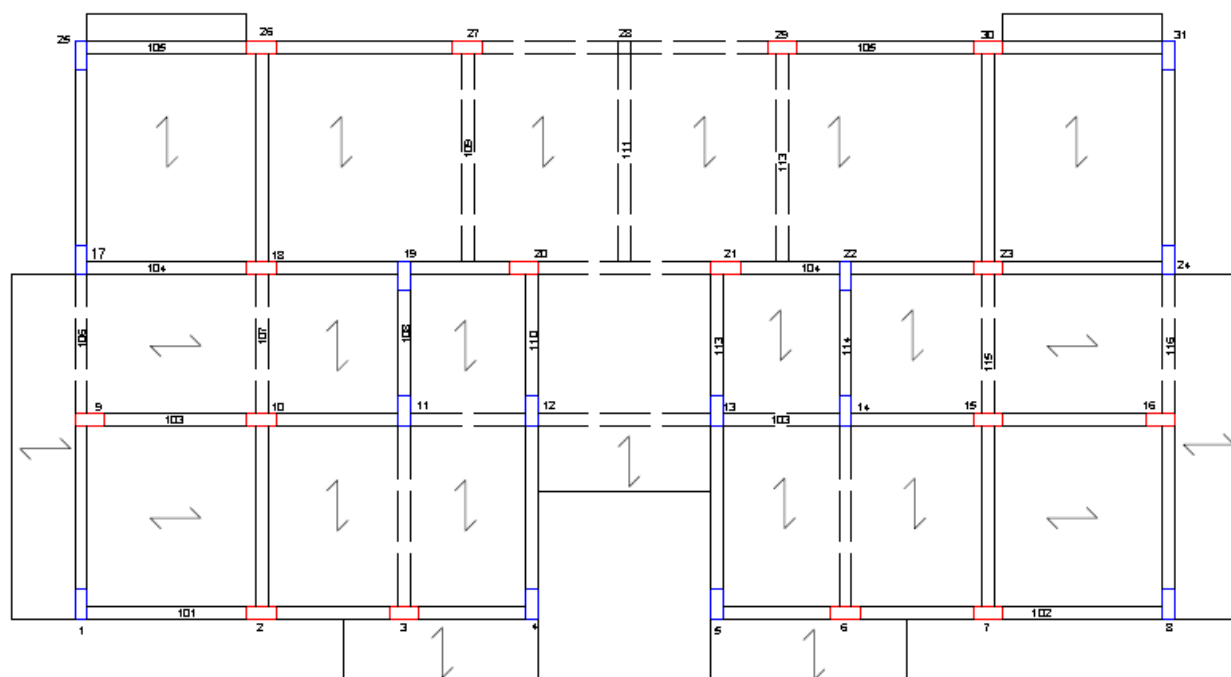
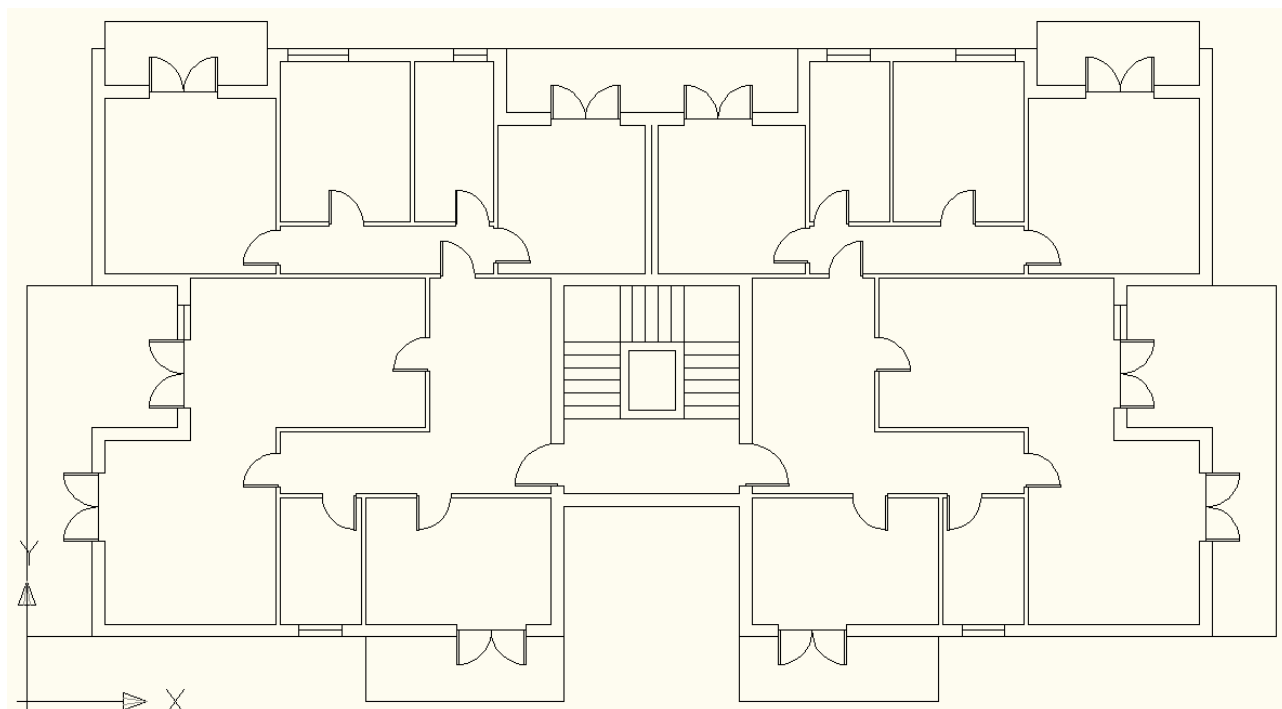
sito	ag	F _o	T _c [*]	suolo	p.int	imp lib	copert
Messina (ME)	0.249	2.410	0.360	C	si,tel	6	tetto



Mazzullo Maria Grazia



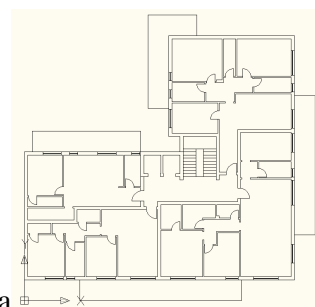
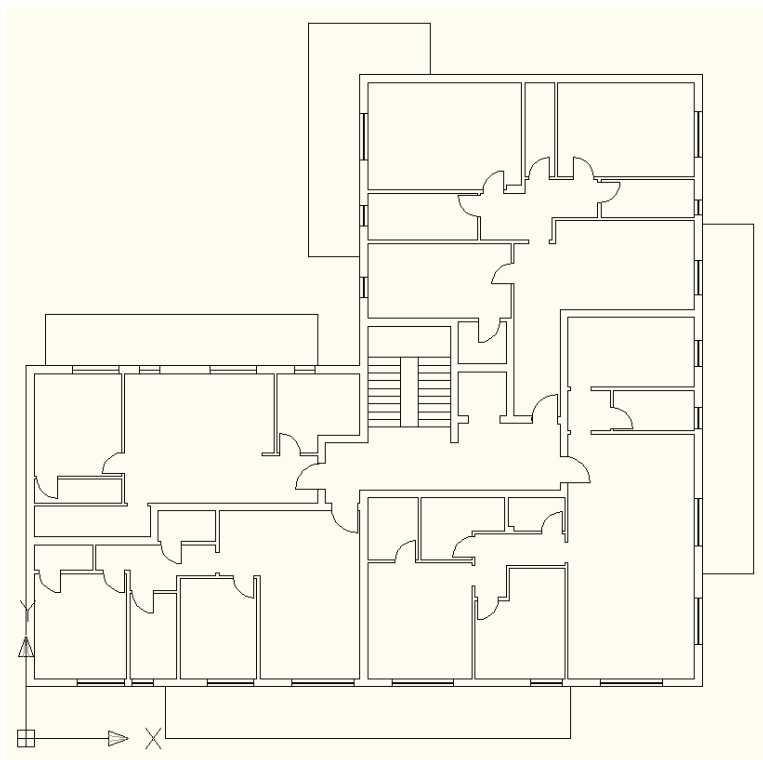
sito	ag	F _o	T _c [*]	suolo	p.int	imp lib	copert
Aci Sant'Antonio (CT)	0.226	2.594	0.311	C	si,tel	6	terrazza



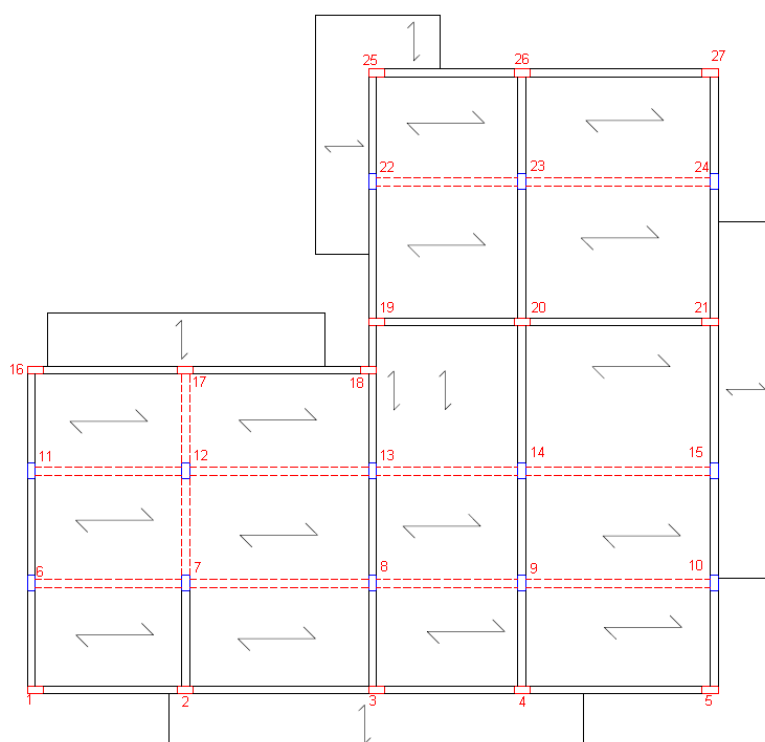
Purrazzo Antonio



sito	ag	F _o	T _c [*]	suolo	p.int	imp lib	copert
Capizzi (ME)	0.168	2.429	0.318	C	si,tel	6	tetto



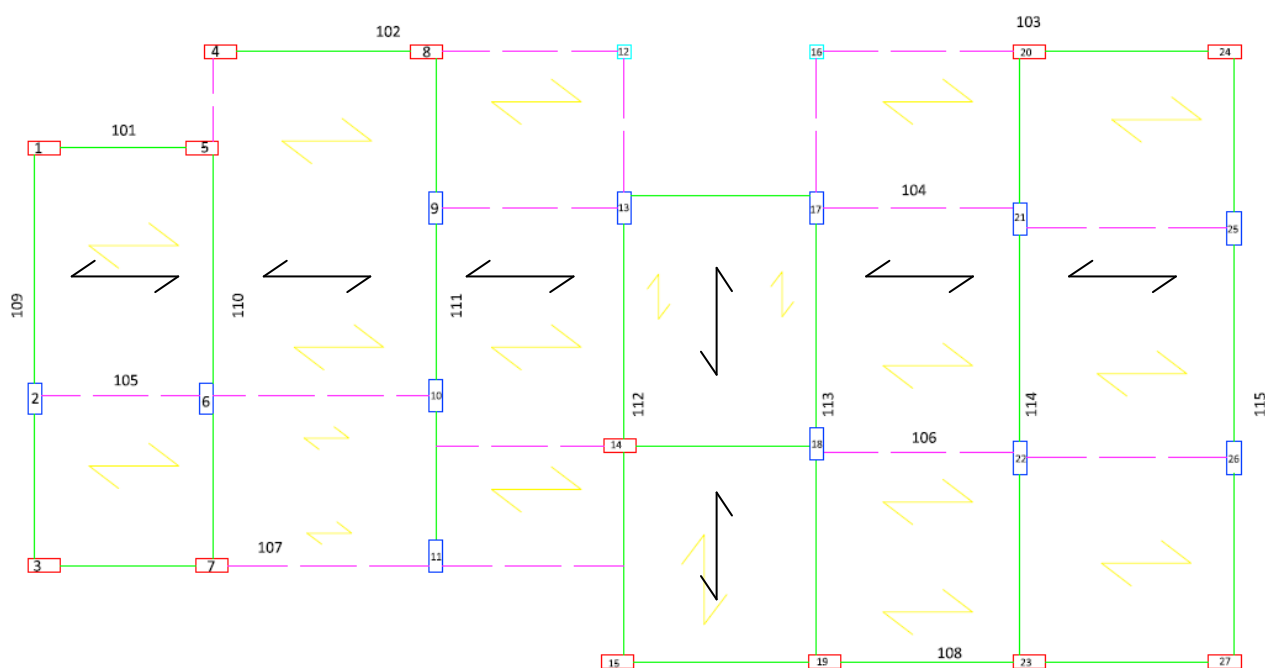
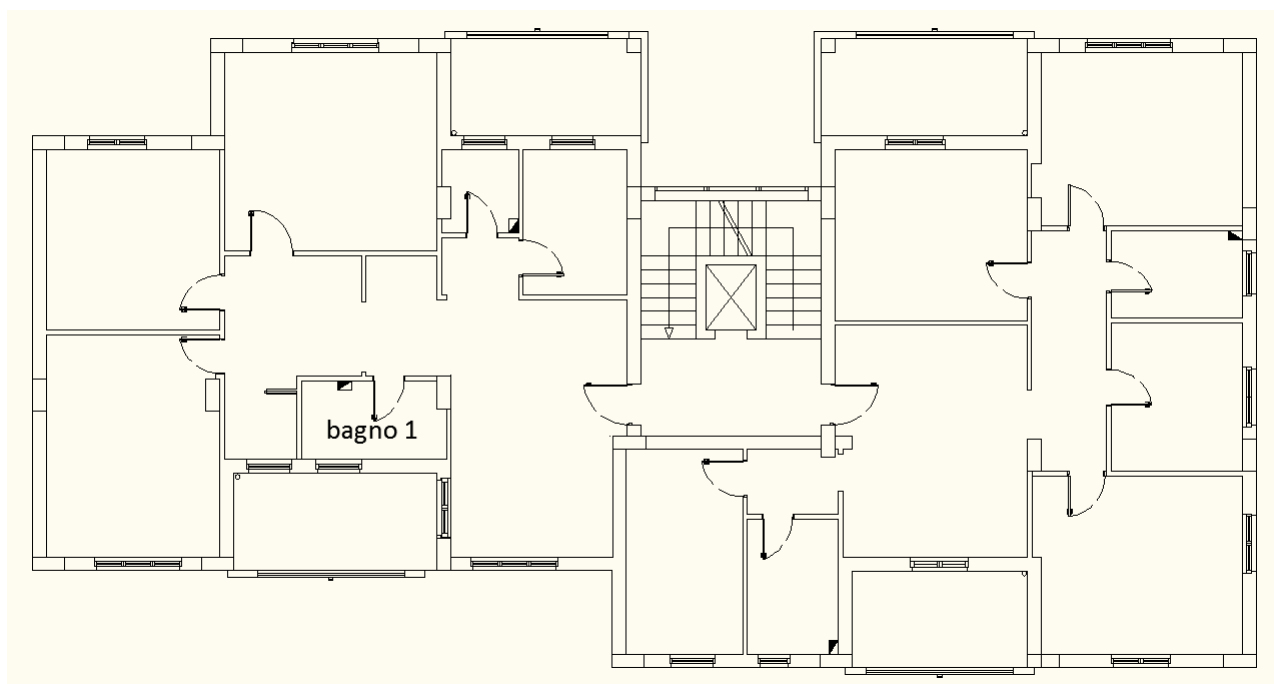
era



Raffa Federica



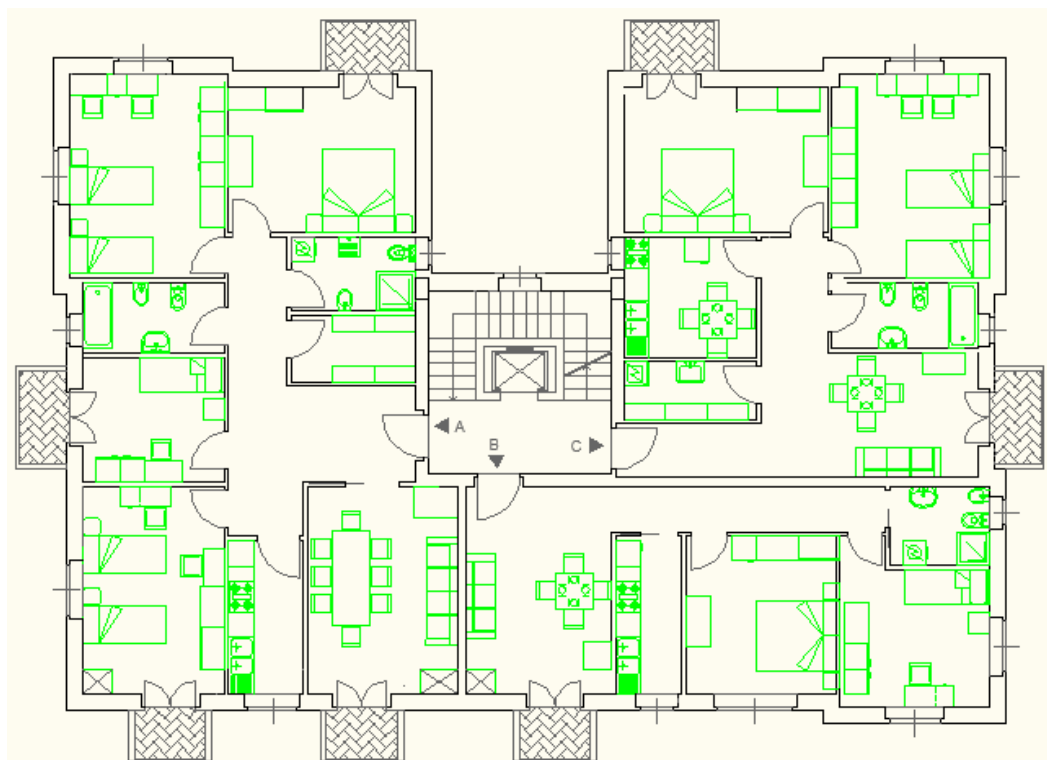
sito	ag	F _o	T _c [*]	suolo	p.int	imp lib	copert
Sortino (SR)	0.275	2.278	0.420	B	no	6	terrazza



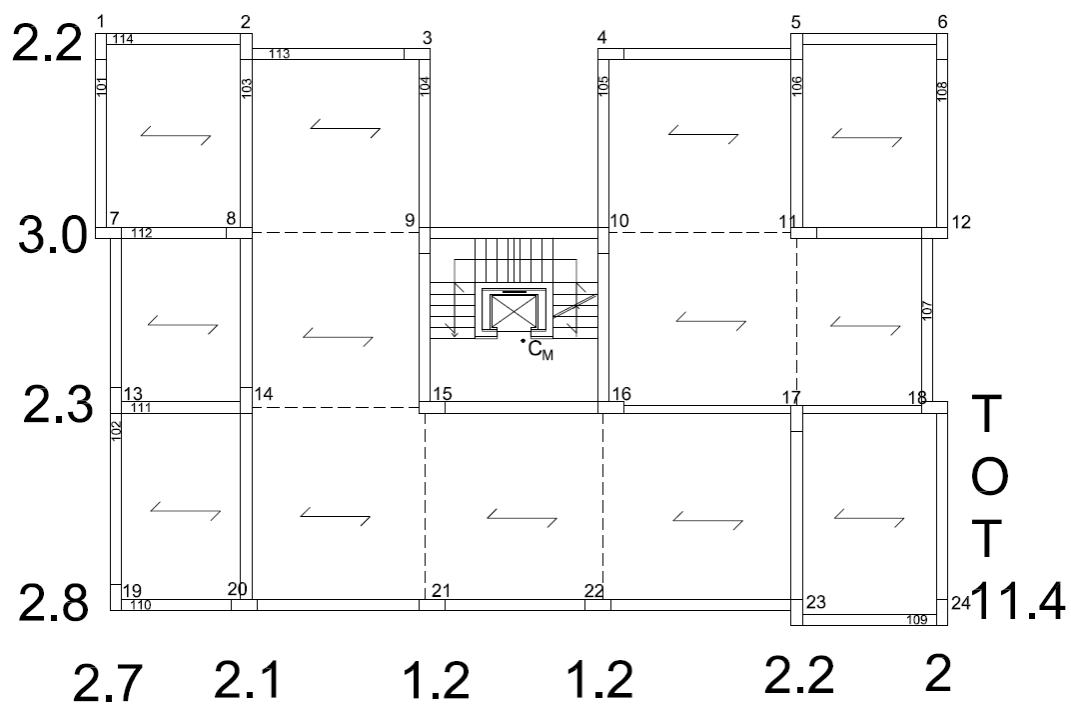
Randazzo Giovanni



sito	ag	F _o	T _c [*]	suolo	p.int	imp lib	copert
Misterbianco (CT)	0.200	2.482	0.361	B	si,par	6	terrazza



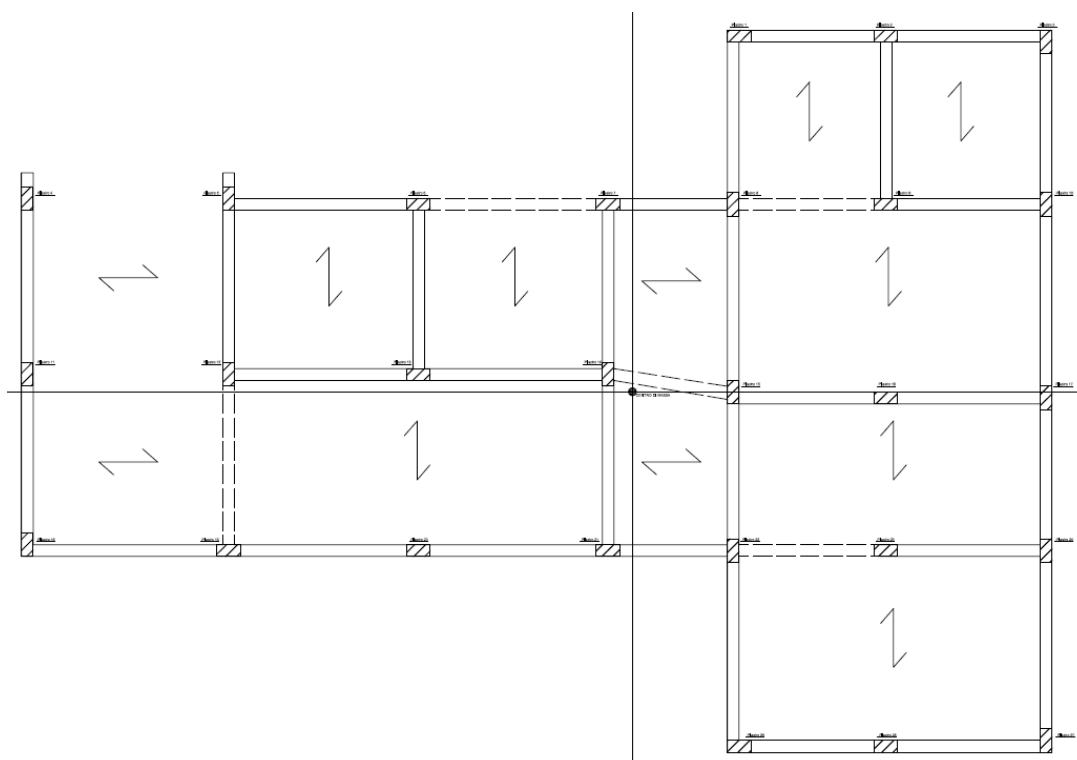
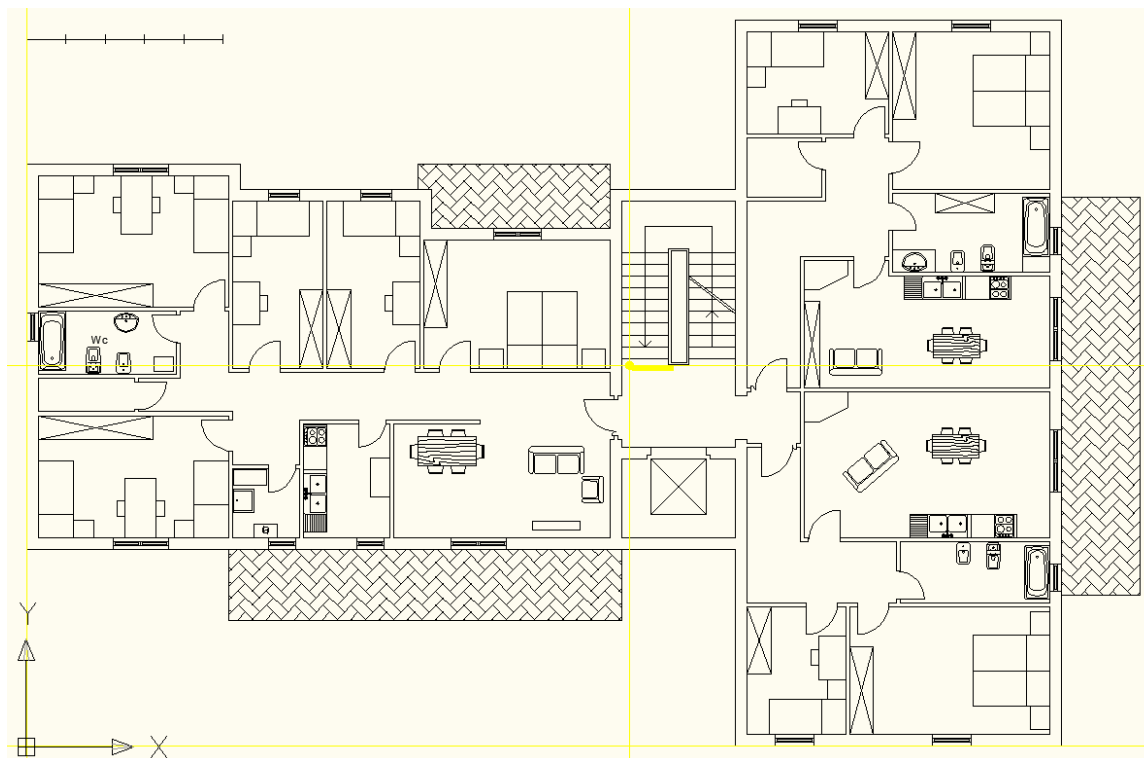
TOT 10.3



Rannisi Oriana



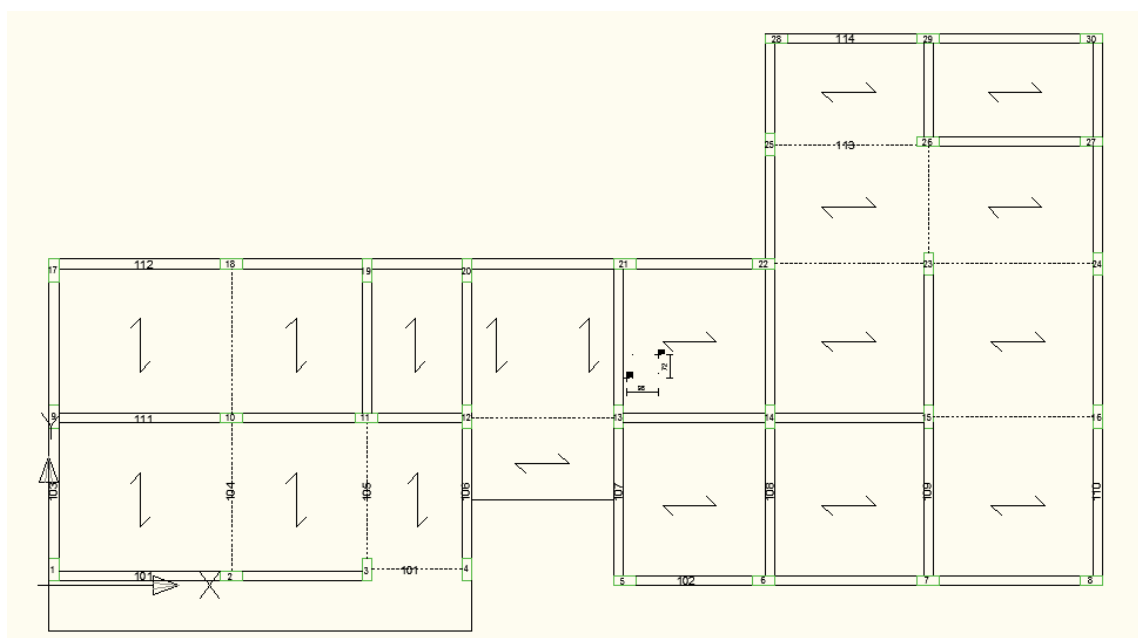
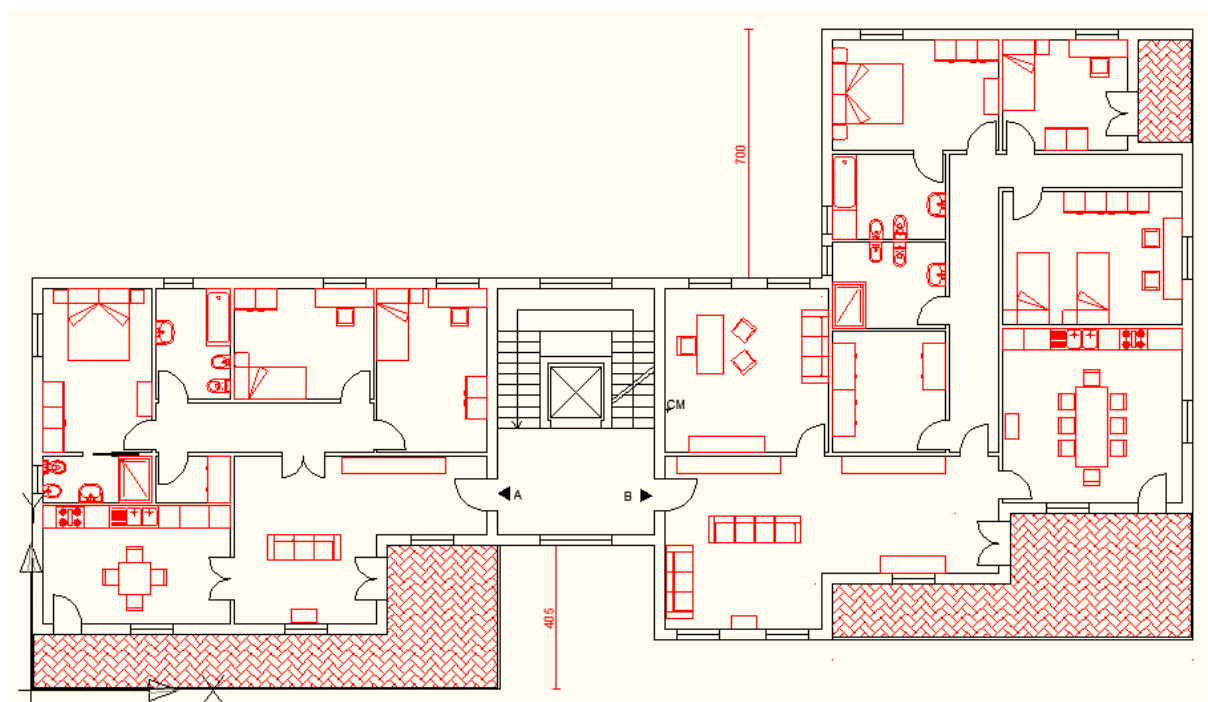
sito	ag	F _o	T _c [*]	suolo	p.int	imp lib	copert
Linguaglossa (CT)	0.217	2.571	0.316	C	si,par	5	terrazza



Ruggeri Roberto



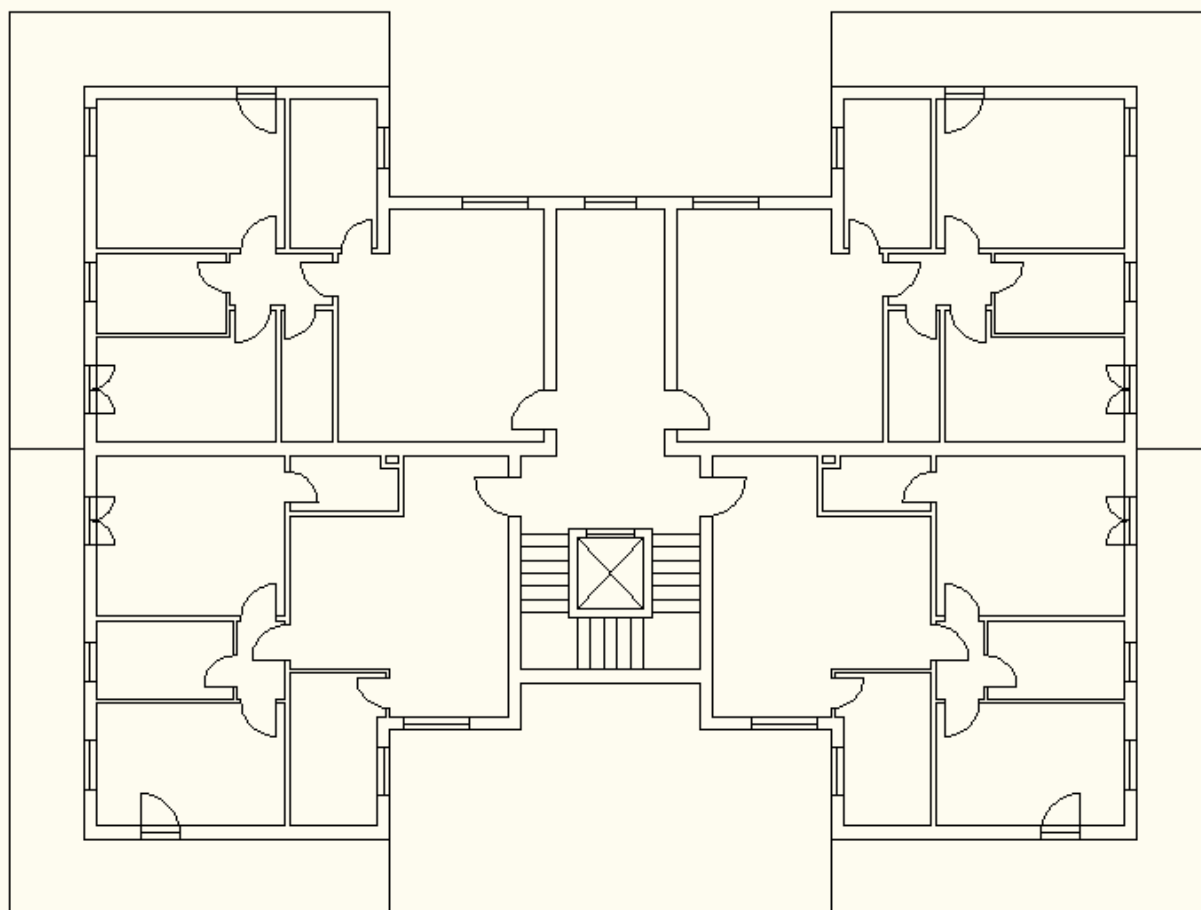
sito	ag	F _o	T _c [*]	suolo	p.int	imp lib	copert
Amatrice (RI)	0.259	2.360	0.340	B	no	6	mansarda



Savoca Roberto



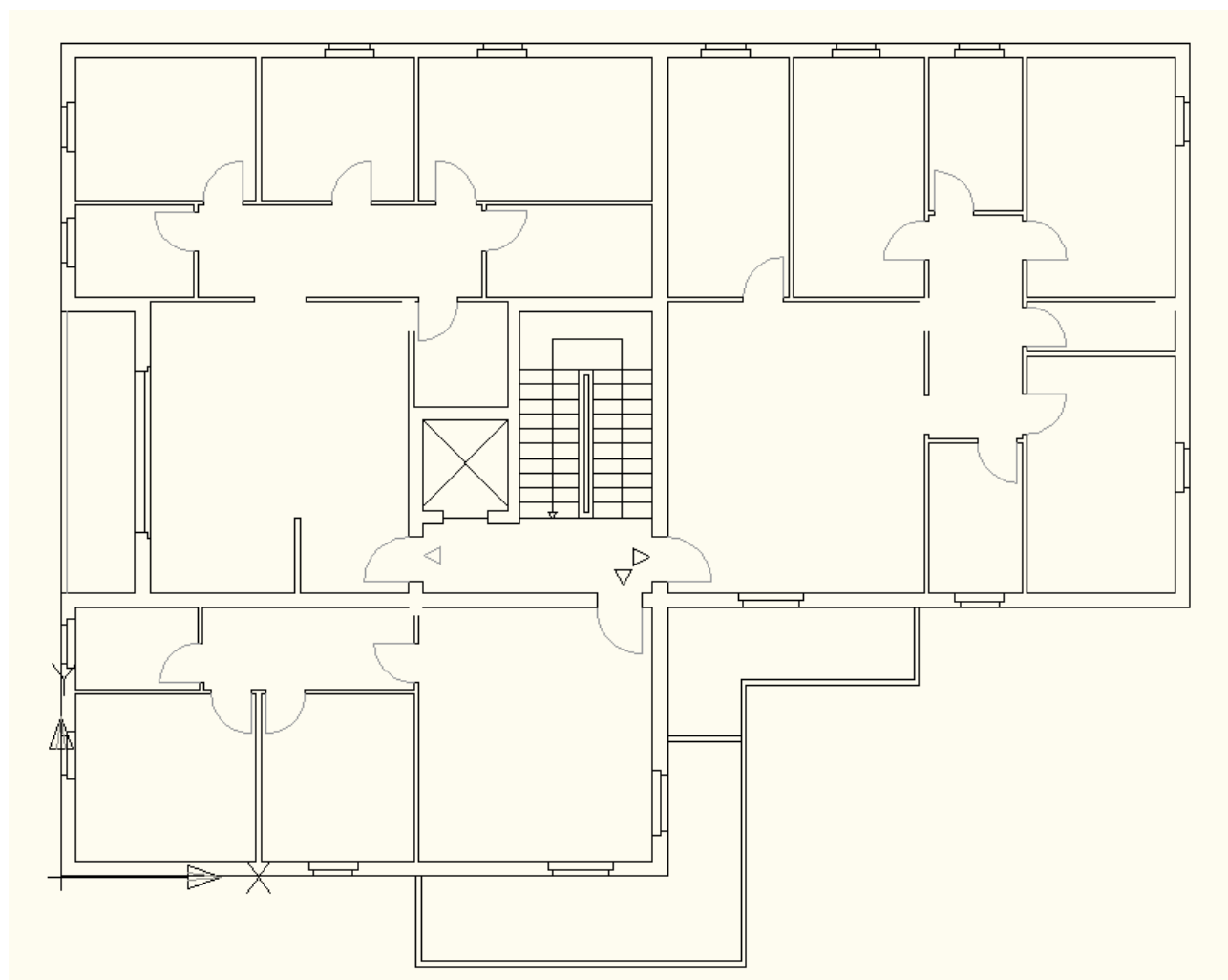
sito	ag	F _o	T _c [*]	suolo	p.int	imp lib	copert
Paola (CS)	0.194	2.450	0.401	C	no	6	terrazza



Scuderi Deborah



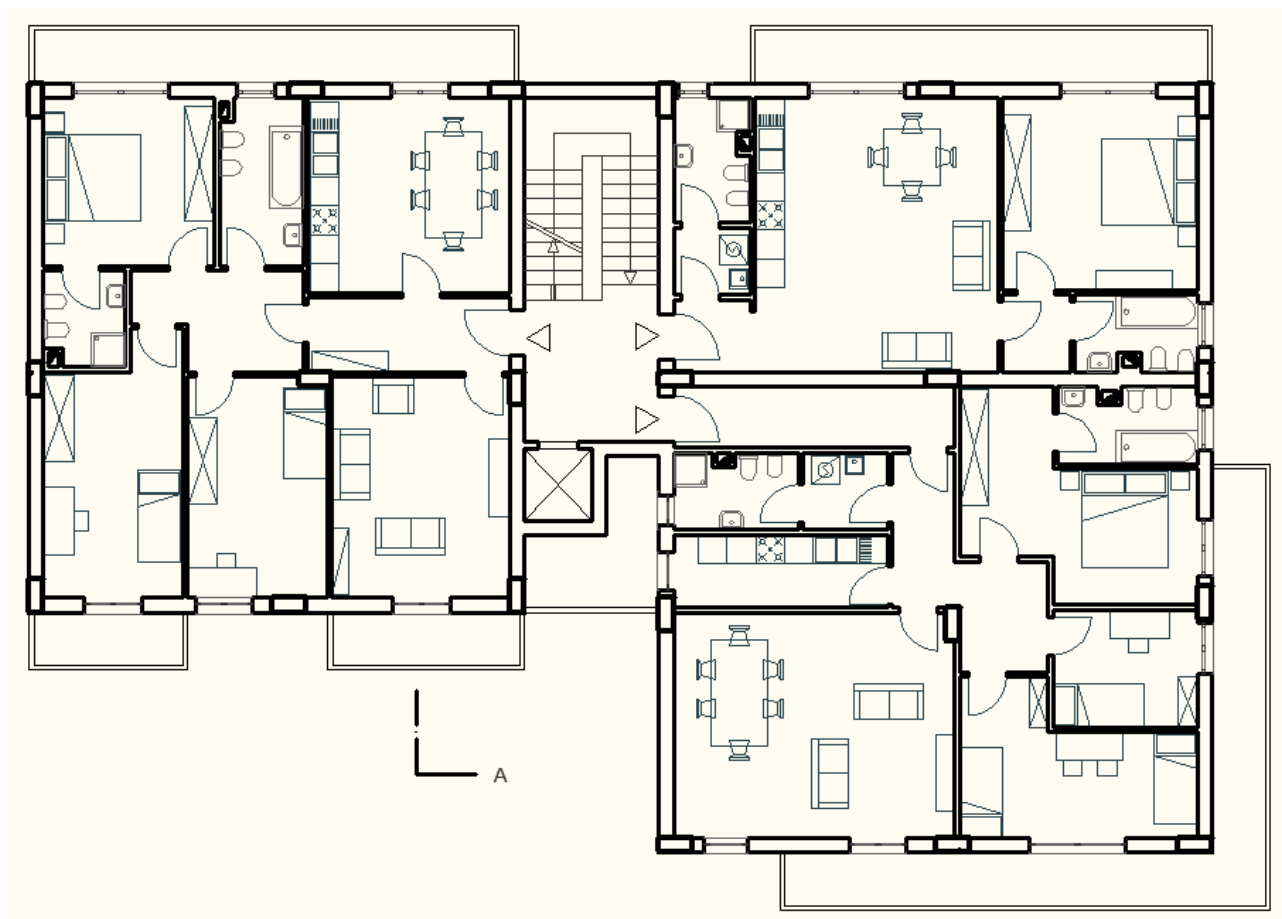
sito	ag	F _o	T _c [*]	suolo	p.int	imp lib	copert
Teramo (TE)	0.183	2.490	0.350	C	si,tel	6	mansarda



Signorello Giulia



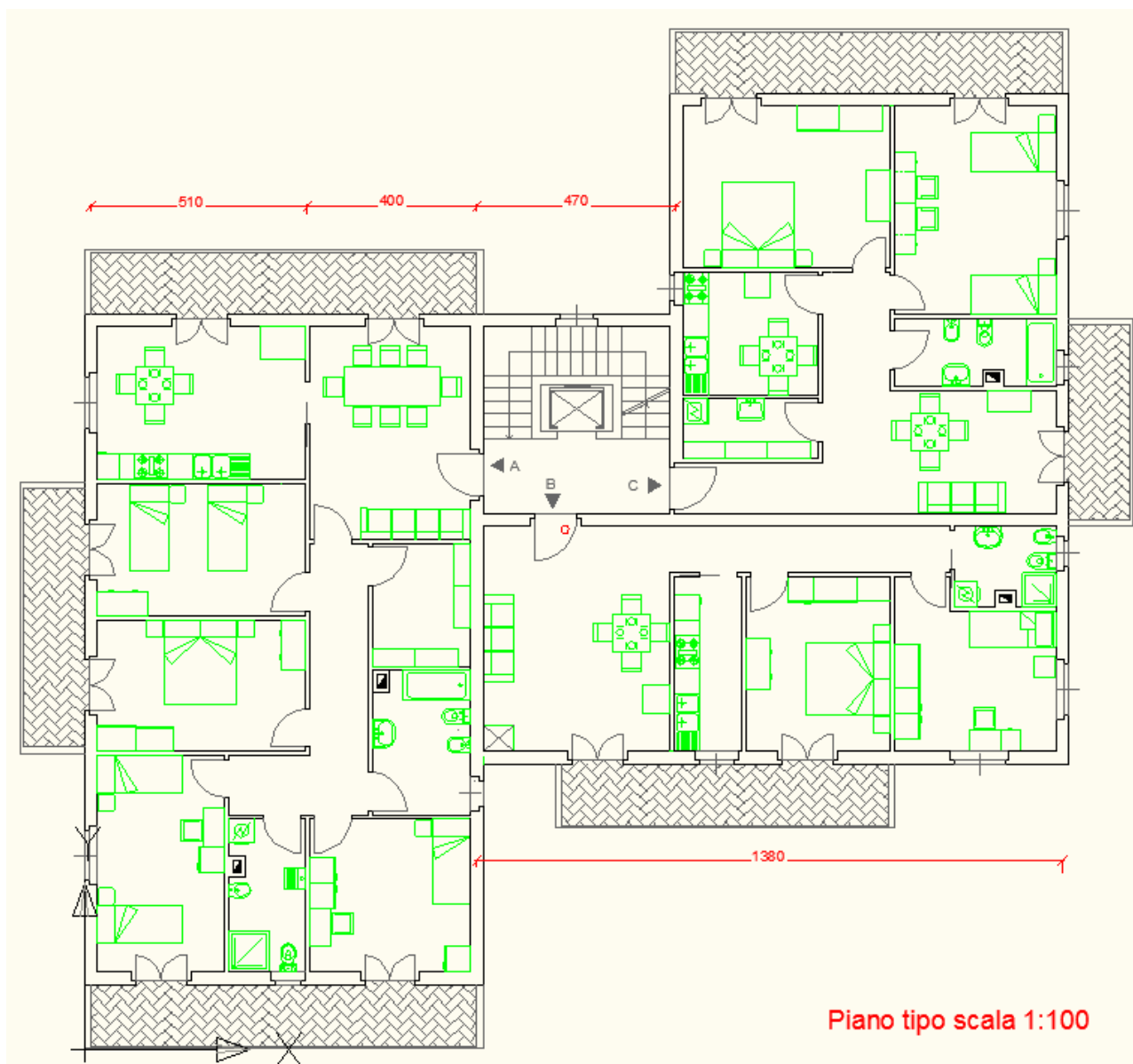
sito	ag	F _o	T _c [*]	suolo	p.int	imp lib	copert
Santa Teresa di Riva (ME)	0.240	2.436	0.248	B	si,par	5	terrazza



Torresi Graziella



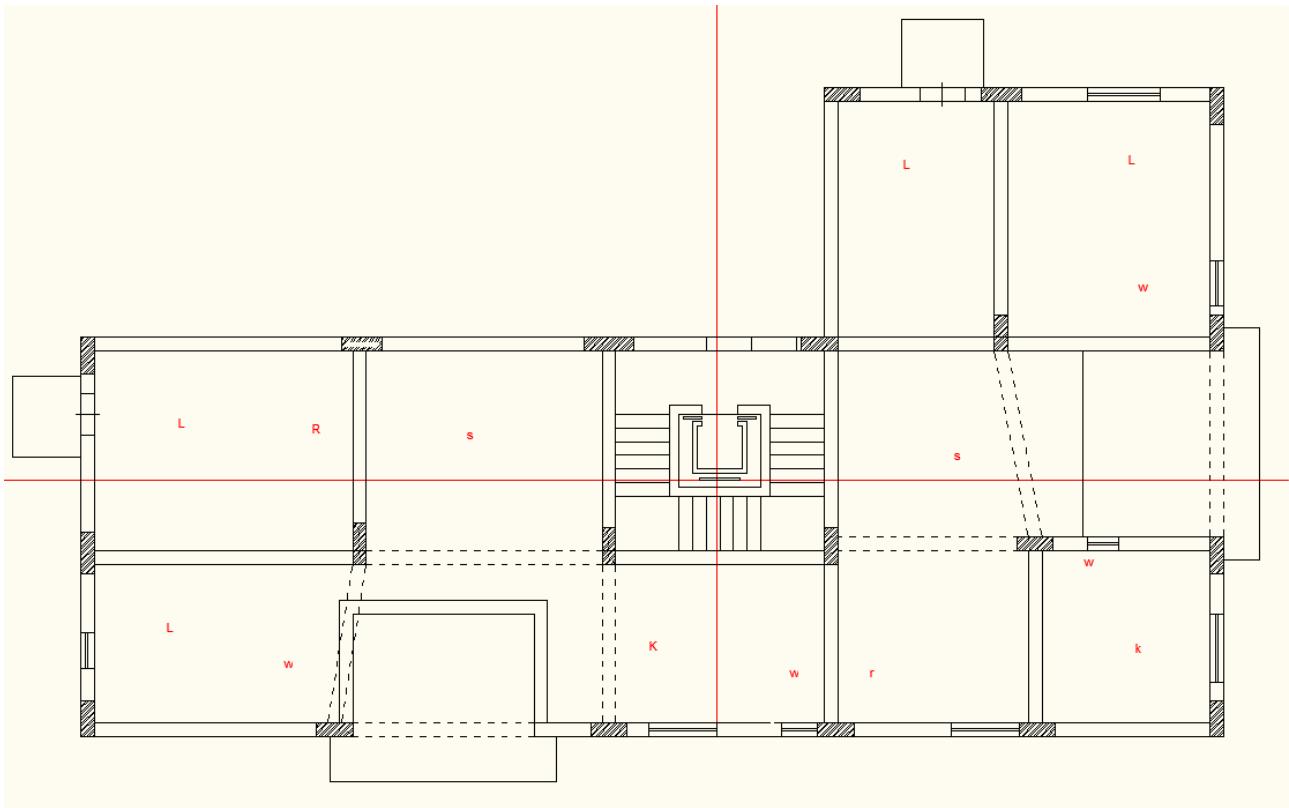
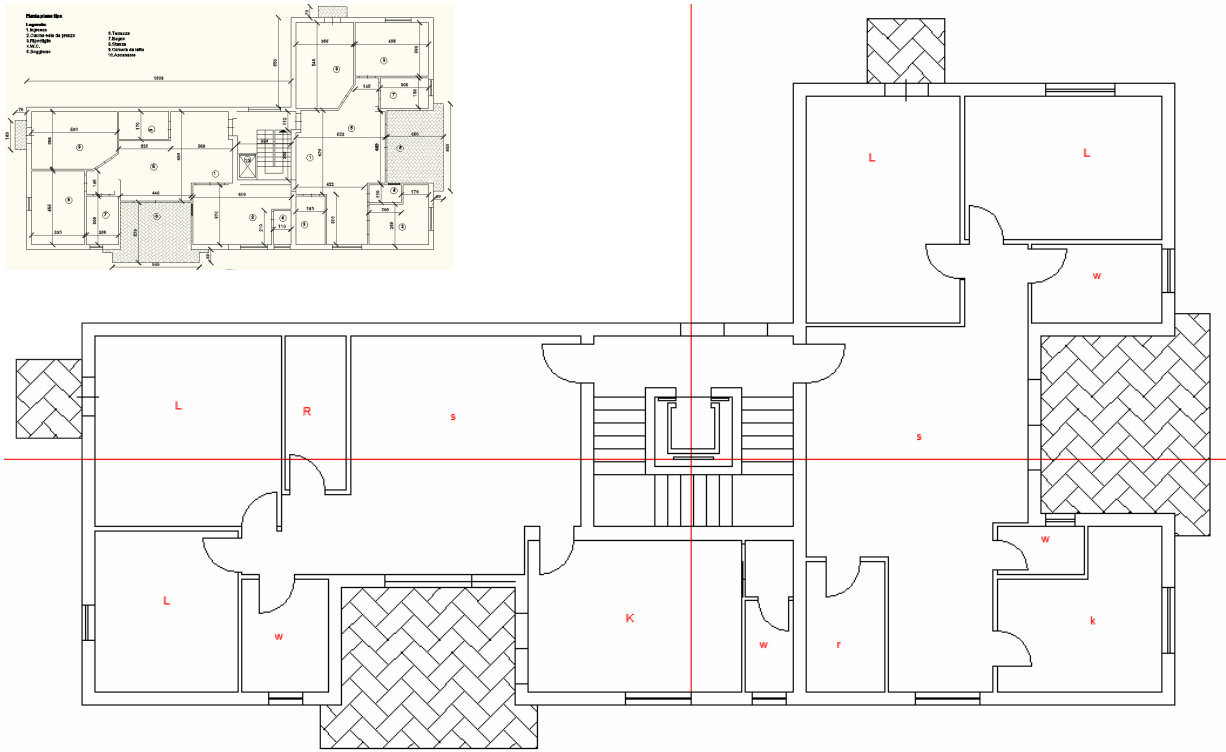
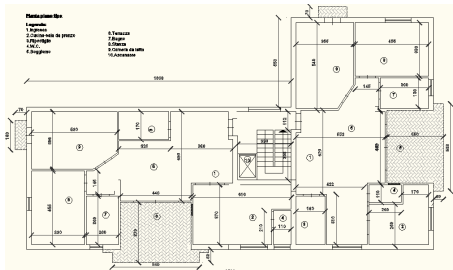
sito	ag	F _o	T _c [*]	suolo	p.int	imp lib	copert
Belpasso (CT)	0.215	2.564	0.319	C	si,tel	6	terrazza



Zakher Veronica



sito	ag	F ₀	T _c [*]	suolo	p.int	imp lib	copert
Norcia (PG)	0.256	2.374	0.340	B	no	5	mansarda



Note:

p.int = Piano interrato

si,tel = sì, ma con struttura a telaio, le pareti di sostegno del terreno sono indipendenti dalla struttura
il primo impalcato è libero di spostarsi

si,par = sì, con pareti di sostegno del terreno collegate alla struttura

il primo impalcato è bloccato e non rientra nel conto degli impalcati liberi di spostarsi

imp lib = Impalcati liberi di spostarsi

il numero indica gli impalcati liberi di spostarsi

copert = Copertura

tetto = copertura a tetto, che può essere (a scelta) una copertura in legno poggiata sull'ultimo solaio
oppure un impalcato collegato all'ultimo solaio (in ogni caso, ultimo solaio e tetto
costituiscono un unico impalcato)

mansarda = copertura a tetto in cemento armato che non arriva mai ad unirsi al solaio sottostante ma
lascia sempre almeno 1.50 m di distacco (copertura e solaio sottostante sono due impalcati
distinti)